

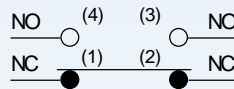


# CWL Limit Switch

## Features

- Double-circuit type of limit switch, is widely used
- With strong aluminum cast outer shell
- High mechanical strength
- Water-proof, oil-proof construction
- Structure preventing oil, water and pressure
- Indicating plate with setting position is installed in it, so it is easy to maintain
- Various of actuators is taken convenience for using
- Built-in contact stand has double-spring, so it has long mechanical life

## Contact Form



## Ratings

Rated voltage	Noninductive Load (A)				Inductive Load (A)			
	Resistance Load		Lamp Load		Inductive Load		Motor Load	
	NC	NO	NC	NO	NC	NO	NC	NO
125VAC	10		3	1.5	10	5	2.0	
250VAC	5		2	1	5	3	1.0	
480VAC	3		1.5	0.8	3	1.5	0.8	
600VAC	1		1	0.5	1.5	1	0.5	
8VDC	10		6	3	10		6	
14VDC	10		6	3	10		6	
30VDC	6		4	3	6		4	
125VDC	0.8		0.2	0.2	0.8		0.2	
250VDC	0.4		0.1	0.1	0.4		0.1	

### NOTES:

1. Inductive load has a power factor of 0.4 min.(AC) and a time constant of 7 msec.max.(DC).
2. Lamp load has an inrush current of 10 times the steady-state current, while motor load has an inrush current of 6 times the steady-state current.

## Operating characteristics

Models	CWLCA2-2	CWLD2	CWLNJ	CWLNJ-S2	CWLCA12-2Q	CWLCL	CWLCA32-41	CWLD	CWLNJ-2	CWLNJ-30	CWLD1	CWLD3
OF Max.	1360g	2720g	150g	29g	1360g	142g	1200g	2720g	120g	80g	2720g	2720g
RF Min.	227g	910g	-	-	227g	28g	-	910g	-	-	910g	910g
PT Max.	20°	1.7mm	28mm	28mm	20°	20°	55°	1.7mm	28mm	28mm	1.7mm	1.7mm
OT Min.	30°	5.6mm	-	-	30°	30°	35°	6.4mm	-	-	5.6mm	5.6mm
MD Max.	12°	1mm	-	-	12°	12°	-	1mm	-	-	1mm	1mm
TF Max.	2720g	-	-	-	2720g	200g	-	-	-	-	2720g	2720g
TT Min.	50°	6.5 ± 0.8mm	-	-	50°	50°	OP:90 ± 10°	OP:34 ± 2.8mm	-	-	6.5 ± 0.8mm	9 ± 0.8mm

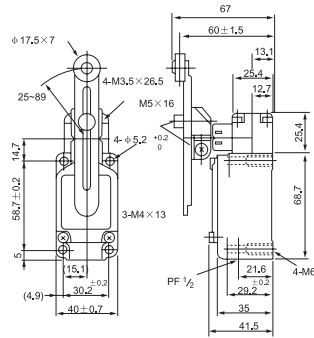
## Characteristics

Operation speed	1mm-2m/s
Operating frequency	Mechanical: 120 operations/minute Electrical: 30 operations/minute
Contact resistance	15m Ω max. (initial value)
Insulation resistance	100m Ω above (at 500VDC)
Dielectric strength	1000VAC, 50/60 HZ for 1 minute between terminals of the same polarity
	1500VAC, 50/60 HZ for 1 minute between current-carrying and non-current-carrying metal parts
	1500VAC, 50/60 HZ for 1 minute between each terminal and ground
Vibration	10-55HZ, 1.5mm double amplitude
Shock	Mechanical durable: 1, 000m/Sec <sup>2</sup> (about 100G'S) Malfunction: 300m/Sec <sup>2</sup> (about 30G'S)
Ambient temperature	-10℃ to +80℃
Humidity	<95% RH
Life	Mechanical: 15,000,000 operations above (under rated OT) Electrical: 500,000 operations above
Weight	About 275g
Degree of protection	IP67

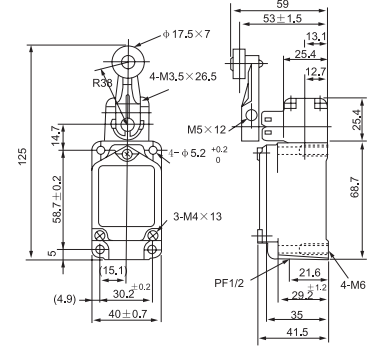
# CWL Limit Switch

Appearance and dimension

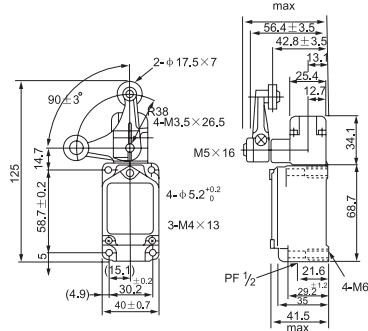
**CWLCA2-2**



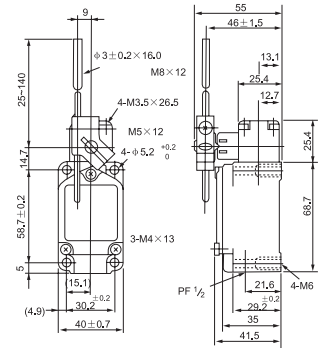
**CWLCA12-2-Q**



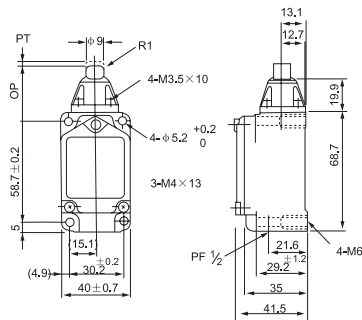
**CWLCA32-41**



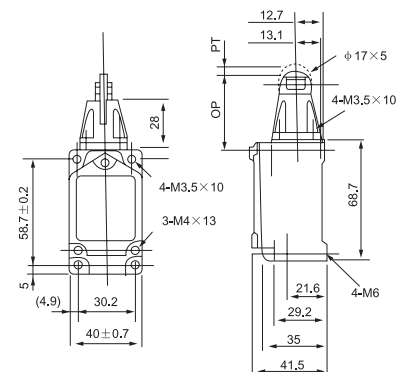
**CWLCL**



**CWLD**

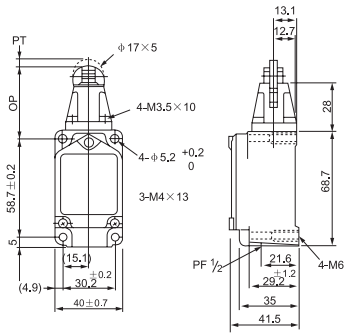


**CWLD1**

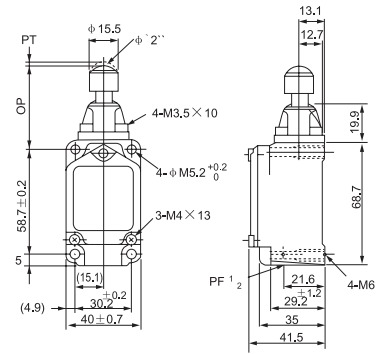


# CWL Limit Switch

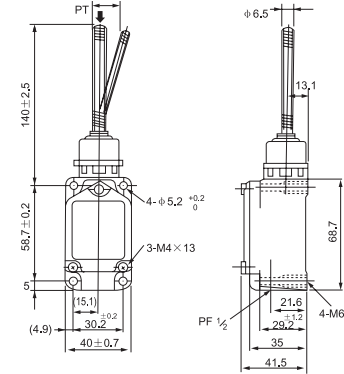
**CWLD2**



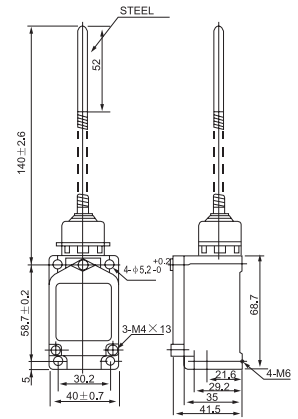
**CWLD3**



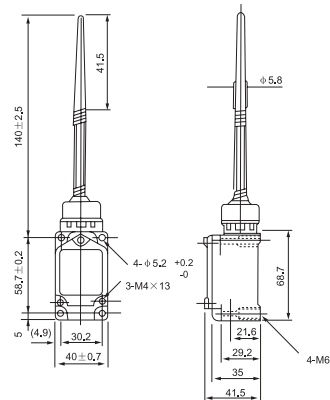
**CWLNJ**



**CWLNJ-30**



**CWLNJ-2**



**CWLNJ-S2**

